



Wee County Yarns



Knitting Pattern

www.wee-county-yarns.co.uk



Harold Fatmus



YARN

5x10g JC Rennie 4ply Miniballs (approx. 50m each).
Sample shown in Oyster (main colour – for body),
Rosebud (C1 – for ears and tail), Azure (C2), Blueberry
(C3), Duck Egg (C4)

NEEDLES AND NOTIONS

3mm DPNs and 3.25mm DPNS or circular for magic
loop
Two stitch markers
Tapestry needle
Scrap of felt/black yarn or black beads
for eyes
Fibrefill stuffing, optional bean bag

SIZE

Approx 15cm high

TENSION

28 sts per 10cm over stranded colourwork on 3.25mm
needles

The mouse is knitted with a separate base and body and then filled and seamed. It is very easy to change the pattern to knit this seamlessly, however, if you are using the JC Rennie Miniballs then it is best to wash the fabric before you stuff it. If you do want to knit it seamlessly then pick up 96 stitches around the edge of the base rather than casting them on. Remember to stuff the mouse before grafting the head!



Base – worked flat

With larger needles cast on 8 stitches.

- 1: Knit
 - 2: Kfb, K to end, Kfb
 - 3-6: Repeat row 2 (18 sts)
 - 7: Knit
 - 8: Repeat row 2 (20 sts)
 - 9-11: Knit
 - 12: Repeat row 2 (22 sts)
 - 13- 19: Knit
 - 20: Repeat row 2 (24 sts)
 - 21-27: Knit
 - 28: SSK, K to last 2 sts, K2tog (22 sts)
 - 29-35: Knit
 - 36: Repeat row 28 (20 sts)
 - 37-39: Knit
 - 40: Repeat row 28 (18 sts)
 - 41: Knit
 - 42- 46: Repeat row 28 (8 sts)
- Cast off

Body – worked in the round

With smaller needles cast on 96 stitches in main colour, place marker and join to knit in the round.

Knit two rounds.

Change to larger needles and C2.

Work body chart eight times around. After round 23 the number of repeats of the chart worked are different

Round 23: in C4 only – (K10, K2tog) around. 88 sts

24-26: work the peerie motif 11 times around.

27: Work 1 round in C4 only.

28: Decrease another 8 stitches in C2 only, (K9, K2tog) - 80 sts.

29-30: work 'fake rib' stitches 10 times each round.

31: Decrease as follows: [K2 in C2, K2 in C3, K2tog in C2, K2 in C3] x10 70 sts

32: [K2 in C2, K2 in C3, K1 in C2, K2 in C3] x10

33: Knit one round in C2

34: Switch to main colour and smaller needles. (K5, K2tog) around. 60sts

35: Knit one round

36: (K4, K2tog) around. 50 sts

37: K25, place new start of round marker, K25, place decrease marker, K to end of round.

38: Knit to 3 sts before decrease marker, SSK, K1, sm, K1, K2tog, K to end.

Repeat this round until 18 sts are left between the two markers (36 sts in total)

Shape nose:

Next round: K1, M1, Knit to 3 sts before marker, SSK, K1, sm, K1, K2tog, K to 1 st before end, M1, K1

Next round: Knit to 3 sts before marker, SSK, K1, sm, K1, K2tog, K to end.

Repeat these two rounds once more

16 sts left on each side, 32 sts in total.

Graft these stitches together or cast off and seam flat.

For a blunter nose ignore the M1s on the last four rounds.

Tail

With C1 cast on 5 stitches with smaller DPNs. Work i-cord for about 9cm.

Next row: SSK, K1, K2tog (3 sts)

K3tog and pull the yarn through the last stitch to fasten off.

Ears (make 2. Unless you want a lop-sided mouse.)

With C1 and smaller needles cast on 10sts, K6 rows

7: SSK, K6, K2tog 8sts

8: Knit

9: SSK, K4, K2tog 6sts

10: Knit

11: SSK, K2, K2tog 4sts

Cast off 4 sts

Assembly

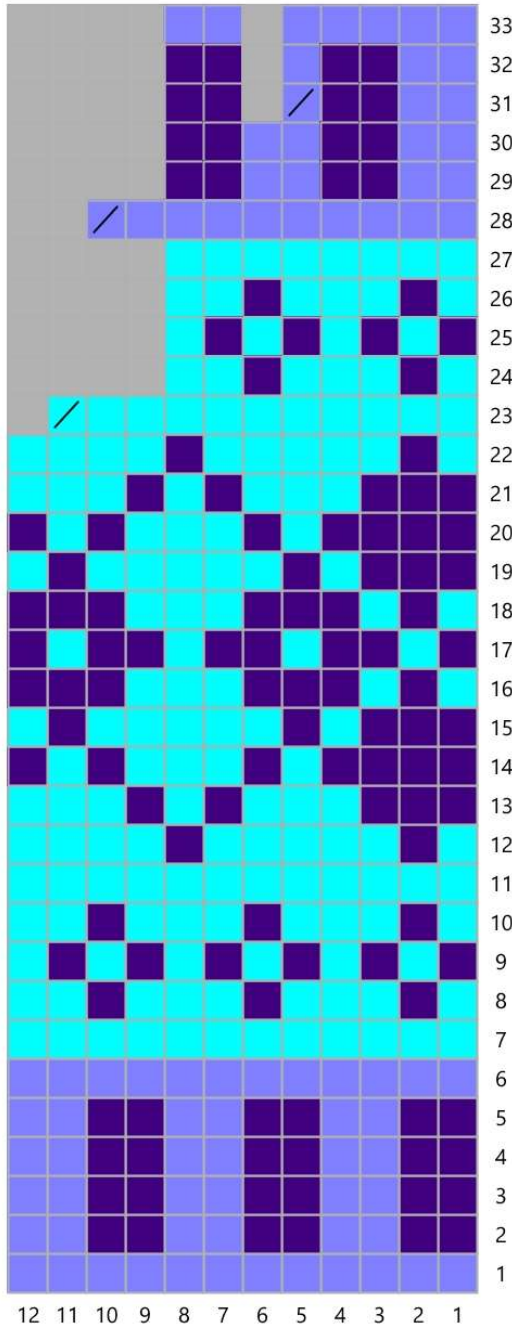
Sew on the ears either side of the top of the decrease lines. The nose is a few stitches of Contrast 1 over the pointy tip. Sew beads on securely for eyes, or embroider small stitches in black yarn or felt. Stitch the tail to the top of the base. Wash the two parts of the mouse – fill a basin with warm water and a squirt of detergent. Allow to soak. Rinse out and refill with more warm water and detergent. Allow to soak again and then rinse out completely and allow to dry.

When the two parts are dry fill the head and nose with fibrefill stuffing. If you want to give your mouse a little gravitas then put a bean bag in the base.

Using whip stitch attach the body to the base, making sure the tail is at the back of the mouse not the front.



Body chart



Key

-  knit
-  Contrast 2
-  Contrast 3
-  Contrast 4
-  k2tog
-  no stitch

Abbreviations

DPNs – Double pointed needles

sts – stitches

Kfb – knit into the front and back of the stitch to increase

K – Knit

K2tog – Knit two together to decrease

SSK – slip the next two stitches

knitwise then knit them together off the right hand needle.

sm – slip marker

M1 – make one by lifting up the bar between the two stitches and knitting into the back of it.



Wee County Yarns

www.wee-county-yarns.co.uk

Made and printed in Scotland

Wee County Yarns 2021

All patterns are protected by the law of copyright and may not reproduced either by photocopying or other means.